

A good paver patio does more than give you a place to set a table and chairs. In a place like San Marino, where homes often sit on larger lots, mature trees matter, and the landscape has to respect a warm, sunny Mediterranean-type climate, the patio becomes part of the way a property works day to day. It has to handle foot traffic, drainage, heat, entertaining, and the visual demands of a refined neighborhood. It also has to fit the home, whether that home was built in the 1920s, the 1940s, or later in a style that still asks for restraint and permanence.

That is why paver patios have become such a dependable choice in hardscaping. They [hardscaping contractors San Marino](#) look finished without feeling overdesigned. They can be shaped to fit a side yard, a garden court, a slope, or a broad backyard that needs distinct outdoor rooms. They also age well when they are installed with the right base, the right slope, and a clear understanding of how water moves across the site.

The easiest patios to live with are not the flashiest ones. They are the patios that quietly solve problems. They give you a level, comfortable surface after years of dealing with patchy grass or cracked concrete. They make room for outdoor kitchens, seating areas, and fire features without turning the yard into a construction site. They work with retaining walls when a property has grade changes. They leave enough flexibility for irrigation, lighting, and planting beds so the whole landscape feels connected instead of pieced together.

## **What makes a patio genuinely easy to use**

A patio earns its keep when it reduces friction. That sounds simple, but it touches nearly every part of outdoor living. If the space is too hot, too slippery, too steep, or constantly collecting water, people stop using it. If the edge details are awkward, furniture never sits right. If the surface cracks or settles unevenly, the whole yard starts to feel neglected.

Paver patios avoid a lot of those problems because they are built as systems rather than as a single rigid slab. A well-prepared base and properly laid pavers can handle small shifts in the ground much better than poured concrete. That matters in hillside settings and on older properties, where soil conditions and mature root systems can complicate the work. It also matters in climates like San Marino's, where long dry stretches are followed by irrigation use and occasional weather swings that expose weak drainage choices.

There is a practical side to this that homeowners appreciate immediately. If one area ever needs to be lifted for access to underground utilities, irrigation lines, or drainage improvements, pavers are far less disruptive than breaking out a concrete slab. The surface can be removed and reset more cleanly. That is not the kind of benefit people talk about at the design stage, but it becomes very real over time.

## **Why pavers fit San Marino homes so well**

San Marino has a residential character that rewards thoughtful landscape design. Many properties are tied to an estate feel, with generous setbacks, mature trees, and homes that should not be overwhelmed by an overbuilt yard. That makes paver patios especially useful because they can be tailored to the scale of the house and the site. A patio can sit close to the home as a quiet morning coffee space, or it can open into a broader entertaining terrace without looking like a slab dropped onto the lawn.

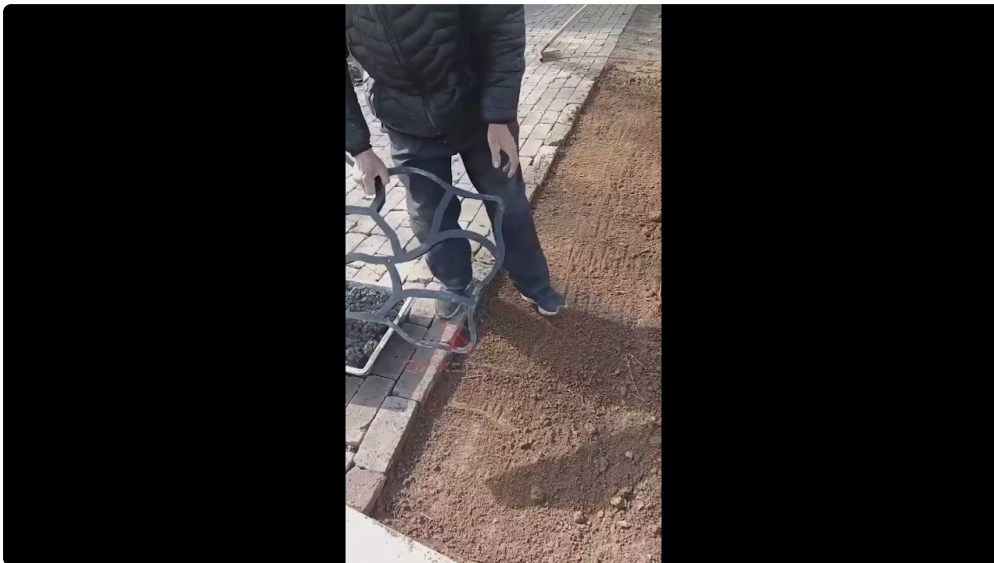
The local setting also favors refined, garden-centered design. Near places like the Huntington Library, Art Museum, and Botanical Gardens, or around streets that echo the quiet dignity of Lacy Park and El Molino Viejo, the best outdoor spaces feel composed rather than busy. That is where pavers shine. They offer pattern, color variation, and texture without forcing a hard visual line that fights the architecture.

San Marino's homes often need outdoor improvements that respect older structures and established plantings. It is common to see a backyard project built around mature trees that have been there for decades. A paver patio can be shaped around those conditions more gracefully than a rigid concrete pad. The edges can curve around trunks, beds, and garden paths. The space can also be set up to preserve views from the interior, which is often just as important as what happens outside.

## The hidden value of drainage and slope control

Many patio problems begin with water, not with the surface material. A space that looks beautiful in dry weather can become frustrating after the first real irrigation cycle or storm if the slope was never planned carefully. Water that pools near the house, runs toward a foundation, or saturates a planting bed at the wrong point will eventually cause headaches.

That is where drainage and grading deserve serious attention before any paver is set. In many hardscaping projects, the patio is only one piece of a larger water-management plan. Retaining walls may be needed to manage a hillside or a stepped backyard. Drainage channels, gravel sublayers, and carefully directed runoff can make the difference between a patio that stays usable and one that creates constant maintenance issues.



This is especially important in San Marino-area landscapes with elevation changes. A gentle slope that seems harmless on paper can create awkward furniture placement or allow water to drift toward the house. A more considered design can turn that same slope into an advantage by using retaining walls to create levels, steps, or planter terraces. That kind of structure makes the yard easier to move through, and it also helps the patio feel settled into the site rather than perched on top of it.

I have seen patios that were technically large enough for entertaining, but because the grade was ignored, no one ever wanted to use the space after a rain or heavy irrigation. Once the drainage was corrected and the paving was reset with proper pitch, the same patio became the place where the family gathered most evenings. The material never changed. The usability did.

## Paver patios and outdoor kitchens work best together

When homeowners talk about making outdoor living easier, they are often really talking about reducing the number of steps between cooking, serving, and sitting down. That is why outdoor kitchens pair so naturally with paver patios. The patio creates the stable working surface. The kitchen anchors one side of the space. Seating can

face the cook without feeling cramped, and traffic can move around the perimeter without cutting through the middle of the meal.

The design challenge is not just about fitting appliances into a corner. Outdoor kitchens need room for prep, landing space, and safe movement. They also need to be located where smoke, heat, and utility connections make sense. Paver patios help because they make it easier to define these zones clearly. A grill station can sit on one side of the terrace, a dining table can occupy the center, and a lounge area can remain slightly separate without requiring a wall to divide everything.

In a climate with strong sun, surface comfort matters too. Pavers with the right color and finish tend to feel more welcoming underfoot than a broad, featureless concrete slab. If a patio is meant to support an outdoor kitchen, the comfort of the cooking zone matters just as much as the appearance. Nobody wants to stand for long periods on a surface that reflects heat or looks beautiful but performs poorly at midafternoon.

## Small decisions that make a big difference

The best paver patio installations are full of small, practical choices that do not look dramatic in a photograph but matter every single day. Edge restraint, joint material, transitions to doors and paths, and the relationship between patio height and threshold all affect whether the space feels effortless or fussy.

A few choices consistently improve livability:



1. Keeping walking paths wide enough that two people can pass without squeezing.
2. Matching patio layout to furniture size instead of designing first and measuring later.
3. Using transitions that avoid sudden steps where people will carry trays or push open doors.
4. Planning utility access before hardscape is installed, especially around irrigation and lighting.
5. Leaving room for planting beds so the patio does not feel like a hard island.

These are not glamorous details, but they are the details people notice every time they use the yard.

## Irrigation should support the patio, not fight it

Outdoor spaces work better when irrigation is treated as part of the design, not as an afterthought. In Southern California, where water efficiency is always part of the conversation, this is not just a maintenance issue. It affects what can be planted, how often surfaces stay wet, and how much effort the homeowner will spend keeping everything healthy.

California's water-efficient landscape rules have made planning more deliberate on qualifying projects, and that is a good thing. The combination of paver patios, drought-tolerant planting, and efficient irrigation can reduce wasted water while still keeping the landscape attractive. In practical terms, this means avoiding overspray onto hardscape, keeping drip lines accessible, and making sure planting beds are sized realistically for the climate.

Nearby municipal water agencies also emphasize conservation and, in some areas, offer landscape transformation rebates or related programs. That matters because a patio project is often the moment when homeowners finally rethink the rest of the yard. If the lawn is tired, the irrigation is aging, or the planting palette no longer fits the property, the patio can become the center point for a broader update. A patio surrounded by efficient irrigation and better plant choices is easier to live with than a beautiful hardscape constantly ringed by soggy borders or thirsty turf.

On many properties, the smartest solution is not to eliminate every green area. It is to choose where lawn still adds value and where it does not. A modest lawn can work near a play area or as a visual opening, while other sections become planting beds, seating courts, or gravel-led transition spaces. The patio then serves as the anchor for a lower-maintenance yard that still feels finished.

## **How retaining walls expand what a patio can do**

On flatter lots, a patio can often be laid out in a straightforward way. On sloped properties, retaining walls become part of the conversation very quickly. They are not just structural elements. They shape how the yard is experienced.

A retaining wall can create a usable terrace where none existed before. It can hold a planting bed that softens the edge of a patio. It can divide a dining area from a lower play lawn or a service zone. In estate-style landscapes, walls also help maintain the sense of order that many older properties naturally have. They keep the landscape from feeling washed out by grade changes.

The best retaining walls do not call attention to themselves. They feel like they belong. Their height, finish, and alignment should make the patio feel secure and deliberate. When they are paired with paver patios, the result is often a more flexible outdoor plan than one large flat space. You can create destination points, lower sitting nooks, and protected garden edges without cluttering the yard.

This is where experience really counts. A wall that is technically functional but visually heavy can make a yard feel smaller. A wall that is too short can fail to solve the grade problem. The right answer usually sits in the middle, shaped by the site and by how the property is actually used.

## **The role of light, texture, and material selection**

People often choose pavers for durability and ease of repair, but the visual qualities are just as important. In neighborhoods where curb appeal matters and homes carry a strong architectural presence, the patio surface should support the house rather than compete with it. That usually means choosing colors and textures that feel grounded and calm.

A patio can echo the tones of stucco, roof tile, stone details, or garden walls without copying them directly. That restraint is especially effective in San Marino, where the surrounding landscape often includes mature trees and layered planting. The patio should read as part of a larger composition. Strong materials can help, but they should be used with discipline.

Landscape lighting also changes how a patio functions. A well-lit hardscape feels safer and more inviting after dark, and lighting helps outdoor kitchens, steps, and wall edges remain legible. Used carefully, it can extend the

usable hours of the patio without making the yard feel theatrical. That is valuable on a property where evening gatherings matter as much as afternoon ones.

## **Where paver patios support property value and curb appeal**

A well-built patio tends to improve the way a home presents itself, even when it is mostly seen from the backyard. Real estate value is not the only measure here, but it is part of the picture. Buyers notice when outdoor spaces are complete, easy to maintain, and tied into the rest of the landscape. They also notice when the hardscape has been designed to fit the scale and style of the home.

In neighborhoods with strong school and community identity, including areas near institutions like the San Marino Unified School District, families often pay close attention to how a yard supports daily life. A patio that can hold birthday dinners, quiet homework sessions outside, weekend grilling, and small gatherings without constant rearranging becomes part of the appeal of the property itself.

That is especially true when the patio is part of a broader hardscaping plan. If it connects cleanly with retaining walls, irrigation improvements, planting beds, and perhaps an outdoor kitchen or fire feature, the whole landscape feels intentional. The home gains usable square footage in the one place it has always needed more of, the outdoors.

## **Maintenance that stays reasonable over time**

No outdoor surface is maintenance-free, and paver patios should not be sold that way. They do, however, offer a manageable kind of upkeep when they are installed correctly. Sweeping, occasional washing, checking joint material, and watching for settlement are all normal parts of ownership. The key is that the maintenance is predictable.

The most important long-term habits are simple. Keep the patio free of debris so drainage remains open. Pay attention to irrigation overspray so stains and damp spots do not build up at the edges. Refill or repair joints when needed. If a section shifts, address it early before the movement spreads. These tasks are much easier when the hardscape was built with access and repair in mind from the beginning.

The patio also benefits from planting choices around its perimeter. Shrubs and trees should be placed with an understanding of root behavior, canopy spread, and seasonal leaf drop. When the planting plan and the hardscape work together, maintenance drops noticeably. When they do not, even a beautiful patio can become annoying to keep clean.



## **A patio should make the yard easier, not busier**

The most successful paver patios do not demand attention from across the property. They earn trust through daily use. They make it easier to carry food outside, easier to host guests, easier to manage slope, easier to keep water where it belongs, and easier to connect the home to the landscape without turning the yard into a maintenance burden.

That is why they fit so well in San Gabriel Valley locations like San Marino, where the landscape asks for both elegance and practicality. The climate rewards efficient design. The lot sizes reward thoughtful planning. The homes reward materials that feel lasting. And the outdoor lifestyle, especially when it includes garden views, family meals, and quiet evenings outside, rewards a patio that simply works.

A good paver patio does not solve every landscape problem by itself. But it gives the rest of the yard a better foundation. Once that foundation is in place, retaining walls can shape the grade, irrigation can support the planting, outdoor kitchens can become useful instead of cramped, and the whole hardscape can feel calmer and more livable. That is the real promise of a well-planned patio. It makes the outdoors easier to use, and easier to enjoy, day after day.