

LPG defense checks are one of these matters that hardly get concentration when everything is operating properly. The hob lights, the boiler runs quietly, the gasoline hearth turns the room into whatever warm and usual. Then at some point an odor seems greater than same old, a flame appears to be like a little bit exclusive, or the gadget starts off acting "basically properly" other than appropriately proper. That's after you comprehend peace of intellect is not a feeling you anticipate, it truly is something you earn through events exams and lifelike preservation.

LPG, no matter if that is a tank feeding your place or cylinders presenting a specific equipment, behaves like all gasoline manner: it needs splendid fuel pressures, blank combustion, nontoxic venting, and sound pipework. A sturdy LPG safety check isn't always pretty much ticking containers. It is ready confirming the total chain is behaving as it must, from the incoming gasoline source to the means the appliance burns, to how combustion products are handled. If any edge is drifting out of spec, you need to understand in the past it turns into a limitation.

## **What an LPG protection look at various in general protects you from**

People many times suppose "gas protection" ability preventing leaks, and leaks are simply a priority. But security is wider than that.

When gasoline is burning, you want the combustion manner to be useful and managed. If combustion is incomplete, which you can become with larger ranges of undesirable combustion items. That issues regardless of whether you're strolling a boiler, a fuel fire, or a gas cooker. In LPG tactics, the fuel traits make true regulator settings and rigidity steadiness particularly magnificent. If tension is off, flames can raise, cross yellow, or behave erratically, and equipment sensors can leap tripping or, worse, not realize a arising fault the method they must always.

A right determine additionally appears at the issues that usually get lost sight of in on daily basis life: pipe joints, isolation valves, bendy connectors, corrosion indications, and the situation of resources exposed to heat. It tests air flow and flue efficiency where significant. Even in homes that "look positive," small subject matters can construct quietly, extraordinarily in which homes don't seem to be visited through a tradesperson traditionally.

I have noticed masses of scenarios where the concern became not dramatic. It was once refined. A buyer defined a fuel hearth that took longer to light, or a boiler that carried out neatly for your time after which felt slow on a call for heat. The eventual fix involved more than just resetting anything. The security inspect caught the waft early sufficient that the equipment could be restored to desirable operation with out the reasonably downtime that makes workers angry and worried.

## **LPG within the precise global: tanks, cylinders, and blended setups**

LPG installations aren't all similar. Some homes use a single bulk tank with regulators feeding the process. Others use smaller cylinder preparations, sometimes with distinctive cylinders in rotation. There also are rural properties and small commercial sites with a blended process, wherein one area makes use of a committed equipment whereas every other makes use of a shared furnish.

What I wait for in exercise is how the gadget is actually used. A residence with stable heating demand will behave another way to one where the boiler in simple terms runs once in a while, or the place tenants change through the years. In the commercial international, the styles may also be excessive. I once

supported a small burger van with LPG for cooking, and the setup were "operating" for months, however the technician's safe practices exams exposed wear on a connection that had been exposed to vibration and widely used circulate. It became the sort of predicament that will possibly not show up except it fails at the worst second, after you are within the center of provider.

The peace of mind you favor is not very merely "will there be a leak." It is "is the total setup still secure, still secure, and nonetheless incredible for the way that is getting used."

## **How an LPG protection verify ties into boiler provider and boiler repair**

If you may have an LPG boiler, the safeguard look at various and boiler repairs traditionally overlap in a pure approach. A boiler safe practices and overall performance look at various more often than not contains verification of combustion, burner circumstance, ignition and keep watch over operation, and a study even if flue gases are being controlled successfully for the boiler form. If whatever thing is out of alignment, it becomes a part of the resolution among cleansing, adjustment, restore, or replacement.

People in certain cases deal with boiler carrier like a "cleansing day." It is more than that. A proper boiler carrier is ready fighting minor problems from transforming into steeply-priced screw ups. For illustration, when you have a boiler that is starting to run less efficaciously, the flame behaviour and combustion features can shift through the years. A security fee catches those alerts earlier they produce hectic signs and symptoms like repeated lockouts, inconsistent warm water, or temperature swings.

When it involves boiler repair, the safe practices perspective topics as a result of maintenance can modification how the appliance behaves. A defective issue perhaps developing an unreliable flame trend. Fixing it should restore riskless combustion behaviour, and that need to be demonstrated, not assumed. If you replace components, you choose a payment that confirms the system is operating because it will have to.

For buildings that experience essential stick to-up after a fix, one of many most simple issues a technician can do is clarify what changed into saw and what was once corrected. On one process, a patron were resetting the boiler for weeks simply because it would run for a section and then reduce out. The safe practices and combustion tests confirmed an problem that made the boiler depend on safety controls extra than it ought to. Once repaired and changed, the boiler stopped behaving love it become "guessing," and the client stopped dwelling with the worry of even if it'd lock out again.

## **Power flush and why it would be part of peace of mind**

Power flush is often outlined within the comparable breath as boiler care, noticeably in residences with older pipework or prevalent move subject matters. The explanation why is straightforward: if debris or sludge builds up, the procedure might not circulate water accurate. That can cause warm spots, inefficient heating, and in a few situations, elevated stress at the boiler resources.

Now, vitality flush is just not a generic reply for every challenge, and it should always be prompt for a intent you could appreciate. If you have got radiators that have bloodless patches, inconsistent warmth, or the boiler that struggles on bound zones, a technician could verify the equipment first. If the readings and observations element to circulate issues, a chronic flush can enhance performance and reduce strain. The "peace of intellect" element comes from restoring sturdy operation instead of repeatedly troubleshooting warning signs.

Where LPG safety determine fits in is that you need the boiler to be burning competently and successfully, while the heating machine is circulating adequately. Safety and comfort cross jointly. A boiler should be would be could very well be routinely sound and still purpose frustration if the heating edge is compromised. Likewise, a method can flow into high quality however nonetheless have a combustion trouble. You need either checked, not just one.

## **Gas fire service: flame patterns inform you what the paperwork can't**

A gasoline hearth is one of these appliances where you'll be able to be informed so much just by hunting at the flame, but you have to no longer quit at visual appeal. Flame coloration and steadiness can deliver clues approximately combustion high quality and air supply. With LPG, regulators and stress balance depend just as they do with boilers and cookers.

Gas fireplace service pretty much consists of analyzing and cleansing key factors, checking the burner circumstance, verifying ignition overall performance, and assessing how the appliance is working. It additionally carries making sure that the appliance is vented and functioning as designed on your setup. A protection verify goes additional, confirming that combustion is clean and that defense controls reply in fact.

One purchaser told me their fuel fireplace looked "a bit lazier" than ahead of, with less regular flames after a recent refill. They did now not odor gas, and that they had been now not definite if they were imagining matters. The safeguard and efficiency tests confirmed the appliance mandatory adjustment and cleansing after the trade in delivery situations. The distinction after service was speedy, and greater importantly, the buyer felt cozy back. That is the truly function.

## **Gas cooker installation and the hidden protection details**

Gas cookers are basically dealt with as easy, considering that folks use them each day and the course of feels regular. But installation safeguard is valuable, especially if you have an LPG deliver association that carries cylinder regulators, versatile hoses, and connections which can be moved or careworn throughout cleaning.

A correct Gas cooker installation ought to take into account the precise equipment sort, the appropriate connector classification, defend seating of fittings, and risk-free routing so the hose or connector isn't strained. After setting up, the safety check is set verifying that the cooker lighting appropriately, that burners are solid, and that flame patterns healthy expectations for LPG. It may be approximately checking for leaks at most suitable facets, which include joints and isolation features.

If you ever smell gasoline when cooking, otherwise you understand not on time ignition or a burner that behaves in another way at any time when you utilize it, do no longer "be patient." Turn off, ventilate, and get the manner checked. You do now not need drama to take it seriously. You need interest whereas it truly is nonetheless small.

## **LPG and plumbing: why the fuel part and water side overlap**

People separate "plumbing things" and "gas points," but in a true abode they overlap physically and operationally. A boiler sits amongst pipework. Flue accessories are put in along ventilation routes. Condensate lines, pipe runs, and entry panels can have an affect on service entry and the manner technicians apply and test the equipment.

If you've got a leak on the plumbing part, it will probably generally create situations that make gas factors more difficult to check out safely, or it is able to cause alarms and shutdown behaviours that confuse the circumstance. On any other hand, a gasoline challenge can reward in a roundabout way, resembling condensation styles around venting or temperature transformations that don't fit expectancies.

This is the place a technician who is familiar with each appliance operation and setting up layout earns belief. A capable service seek advice from seems at the finished meeting, now not just the gas valve [Boiler Repair Essex](#) or burner unit in isolation.



## **Air conditioning, aircon, and combustion air: the airflow factor**

Air conditioning and air conditioning vents will not be mostly thought of as "fuel defense," but airflow around home equipment concerns. Whether you might have an aircon unit in a room with a gas hearth, or you run extractor lovers as portion of your daily regimen, you're able to replace power differentials and airflow styles in enclosed spaces.

I am careful with this subject on the grounds that buildings vary. Some appliances are designed with distinctive requisites. Some flues and venting tactics perform robustly across wide-spread commonplace use. Others are more delicate.

What I look for in the course of an LPG safeguard inspect is whether or not ventilation, extractor use, and any changes to rooms may influence how the equipment attracts air and how combustion items are taken care of. If a consumer has currently established an aircon unit, changed window sealing, or began as a result of a more desirable extractor fan, that is price telling the technician. The objective is to glue the dots, no longer blame a single equipment with no proof.

## **Gas protection certificates and what it should always appearance like**

Many employees seek for an LPG defense certificates on the grounds that they want it for reassurance, for letting agreements, or for his or her very own information. A Gas safety certificate ought to document the tests accomplished, the appliances assessed, and outcome suitable to safeguard. It may be wherein you could see what turned into left compliant, what required awareness, and what movements were really useful.

I actually have determined that the exceptional of the certificate sense is dependent as an awful lot on conversation as paperwork. If a technician is just sending a record and not using a clarification, you're left

guessing. If they discuss you via what they confirmed and what they came upon, you might construct understanding. That knowledge reduces tension when you consider that you understand what was demonstrated and what is still less than commentary.

If the LPG manner consists of more than one appliances, ensure the certificates covers all central devices. A boiler can be checked, a gas hearth shall be checked, and a cooker should be would be could very well be checked individually if it's attached to the identical delivery and set up in a way that demands inclusion. Ask what is covered earlier the go to so there aren't any surprises.

## **Signs you needs to e-book an LPG safe practices inspect before later**

Most individuals do no longer schedule a defense inspect when you consider that one thing is obviously unsuitable. They agenda it on account that it truly is late. Then life interrupts and time passes. Still, there are moments once you may still deal with an quandary as a spark off rather than a nuisance.

If you detect a chronic odor of fuel, do now not assess with the aid of searching near joints with a lighter or flame. Ventilate, shut off the gas supply if which you could achieve this accurately, and call for assistance. If you might be going through a suspected leak, that isn't always the time to "check out tightening whatever."

Other signals is additionally less dramatic. A boiler that takes longer to ignite, a gas fire flame that adjustments color or will become risky, or a fuel cooker burner that does not behave regularly can all factor in the direction of an adjustment or service requirement. If the problem gave the impression after a cylinder change or tank refilling, that may be amazing context, since it shows supply power and regulator settings may perhaps want verification.

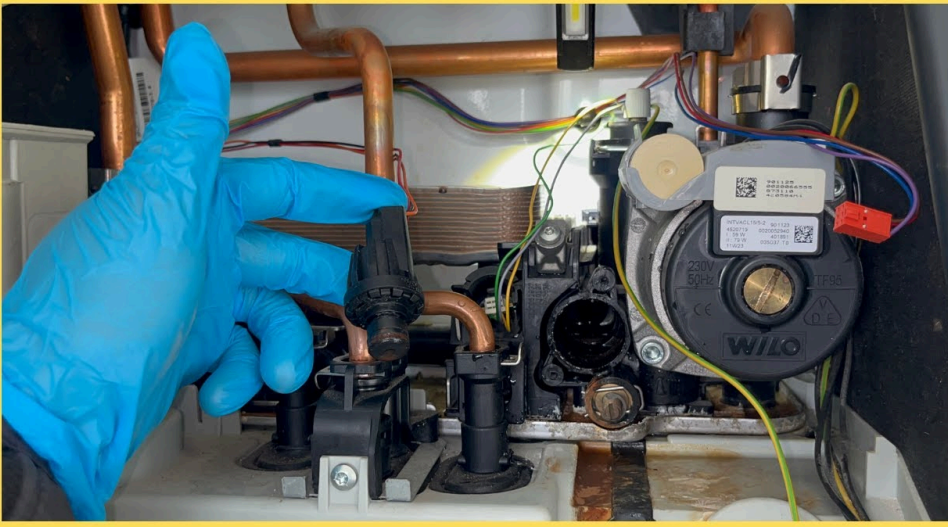
If you stay getting nuisance lockouts, highly repeated ones, treat it as a protection concern, no longer a convenience subject.

## **Choosing the good consumer for LPG security, boiler carrier, and set up work**

There is a big difference between anyone who can "kind it out" and an individual who can diagnose top. For LPG platforms, prognosis subjects as a result of small modifications in setup and appliance type can bring about the various fixes.

When you ebook a technician for boiler installing, boiler fix, gas fireplace provider, fuel cooker setting up, or an LPG safe practices verify, I endorse asking some sensible questions upfront. You need readability on what they're going to examine, what documentation they present, and how they care for findings that don't seem risk-free.

In my revel in, an honest seasoned will do more than persist with a movements. They will explain what they may be checking and why. They will also be obvious about trade-offs. For illustration, if a boiler is vintage and oftentimes wishes consideration, it can be more check beneficial to plot a replacement. But they deserve to not leap to replacement devoid of evidence.



Here is a brief, grounded list you will use if you happen to be making ready for a discussion with and choose to recognise what "exceptional" must always consist of.

- Verify equipment important points and the LPG source arrangement until now checking out
- Check for risk-free operation of ignition and combustion behaviour, no longer just "it lighting"
- Inspect pipework, joints, regulators, and isolation aspects for condition and defense
- Confirm applicable ventilation and flue efficiency wherein desirable
- Provide clean office work and a simple-English clarification of consequences

That is the roughly thoroughness that creates peace of brain, as it removes guesswork.

## **Common LPG "gotchas" that create anxiety**

The problematic edge about safe practices is that some concerns appear as if prevalent quirks till you learn what to watch for.

One generic state of affairs is asymmetric burner overall performance. People expect that is a burner dirtying up, but every so often the problem is power same. Another is warning signs that come and move after refilling a tank or switching cylinders. That is usually innocuous if the system is designed effectively and the regulator is functioning adequately. It could also imply a regulator obstacle or installing mismatch.

A 0.33 scenario is deficient protection conduct. If filters, injectors, or burner accessories will not be wiped clean at provider intervals, combustion can degrade progressively. Customers then describe it as "running yet no longer as nicely," which is precisely the moment to investigate previously it will become a failing appliance.

And then there may be the human thing. A flex hose that has been tugged all through cleaning can turn out to be wired. A valve left partly open after protection can create perplexing behaviour. A vent path that became altered whilst any one remodelled a room can have an affect on overall performance. Safety tests exist on the grounds that existence occurs.

## **Edge circumstances: whilst an LPG safe practices examine becomes extra complicated**

Not each and every job follows a neat script. Sometimes you could have distinct home equipment sharing provide strains. Sometimes pipework is buried or routed due to exhausting to entry spaces. Sometimes older residences have alterations that have been carried out through previous house owners.

If you've got an older setting up, I may count on extra time on inspection and verification. That does no longer mean "possibility." It manner it's possible you'll want added tests because documentation is lacking and also you is not going to assume beyond work meets recent surest exercise. A cautious strategy protects you because it prevents assumptions.

If you are in a permit assets, or you've gotten habitual trouble with tenants reporting smells or inconsistent functionality, the visit desires a structured manner and transparent handover. A desirable technician will explain what they stumbled on, what a higher step is, and what tenants will have to do if signs reoccur.

If you might be by way of LPG for a small industrial, the chance tolerance is numerous. A burger van gasoline procedure isn't always most effective about the home being risk-free. It is about security for the time of provider, time-honored motion, and the reality that you simply might not stop mid-rush to troubleshoot. That capability you prefer preventative assessments finished early ample that you simply certainly not succeed in the "emergency simply" level.

## **Putting all of it in combination: peace of brain is a events, no longer a one-off**

The phrase "defense verify" can sound like a unmarried adventure. In my enjoy, the peace of intellect comes from constructing a pattern. You agenda provider previously you need it, you respond right away to alterations, and also you avert impressive information.

If you've got a boiler, plan your boiler carrier alongside your LPG security examine agenda. If you will have a gas fire, embrace fuel hearth provider in that rhythm. If your cooker is component of the similar LPG furnish story, be sure the setting up has been assessed and the equipment has been verified as working efficiently.

A events additionally helps financially. Small alterations and cleansing are in most cases much less pricey than emergency boiler fix or a failed appliance in iciness. More importantly, it reduces the emotional fee. Waiting for problems is arduous. Being proactive feels calm.

## **A sensible method to choose what wishes doing**

Sometimes you are not convinced whether you desire a service, a fix, or an set up cost. If you prefer a short selection assistance, the following is how I generally frame it for valued clientele, in undeniable language.

- If it truly is overdue otherwise you just wish reassurance, e book an LPG security determine and comprise all appliances you rely on
- If performance is drifting, book service first, as a result of cleansing and adjustment usually restoration protected operation
- If it did not start, journeys again and again, or you believe you studied a fault, prioritize a prognosis appointment for boiler restore or appliance restoration
- If you might be relocating in, converting provide methods, or setting up new appliances, prioritize LPG-acutely aware boiler installing or fuel cooker set up tests
- If you will have heating movement warning signs, ask no matter if power flush has a function after the components is classed

## **Keeping your own quit of the bargain**

You do no longer desire to was a gasoline engineer to assistance your approach. You just want to discover alterations and cause them to clean for the technician to diagnose.

If your household uses extractors, if home windows are sealed in a different way after renovation, or if you have set up air conditioning, point out it. Those important points can give an explanation for why an appliance behaved in a different way. If you've got you have got a gas fireplace this is cleaning another way or a boiler that is locking out on positive days, write down when it takes place. "It did it twice closing week, on bloodless mornings" is extra effective than "it often fails."

Also, shop get admission to clear. Service visits pass rapid and the inspection is extra thorough when isolation valves and access panels are reachable.

Finally, whenever you ever odor gas, take it significantly. Peace of brain is not achieved by means of ignoring the primary caution.

## **Peace of thoughts that you could feel, not simply paperwork you keep**

A amazing LPG safety verify leaves you with some thing special. You might not have in mind each test finished, but you don't forget the experience of walk in the park: the boiler runs cleanly, the fuel hearth lights predictably, the cooker burners respond as they must always. You cease waiting for surprises.

That results comes from authentic checking out, sincere reporting, and the more or less life like judgment that basically indicates up while a person is aware how LPG techniques behave below popular circumstances. Whether you're planning boiler provider, focused on boiler installation, needing boiler restore, booking gas fire service, arranging fuel cooker installation, or certainly protecting your fuel safety certificates brand new, the middle theory stays the related.

Safety is simply not a dramatic second. It is a steady habit. And in the event you hinder that dependency, peace of thoughts turns into a basic section of domicile lifestyles, now not whatever you wish for.