

A boiler install is not ever with regards to the shiny unit at the wall. The actual paintings happens inside the plumbing line that no person sees once the cupboard doorways are fitted. That pipework run, the order the valves are put, the manner the equipment is balanced, and the small tips like venting and rigidity elements all resolve no matter if the boiler will run easily for years or jump throwing faults the moment the climate turns.

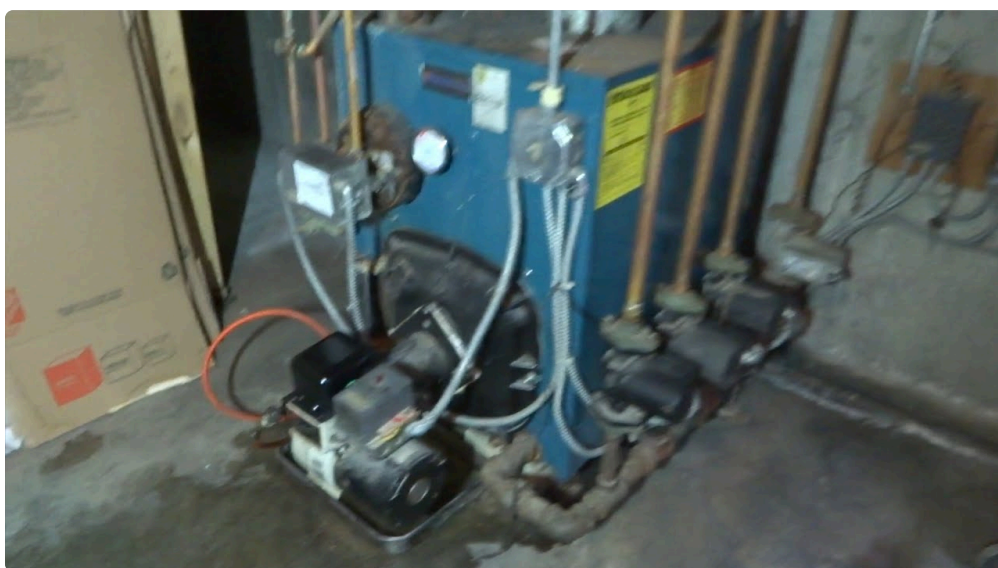
I've opened many airing cupboards that seem to be neat on the outdoor and are a mess when you trace the path of the pipework. I've also seen the opposite, while individual's making plans paid off and servicing is easy. Coordinating pipework and valves for the time of a Boiler Installation is in which you stop destiny Boiler Repair problems earlier they get started.

This is also the part that hyperlinks every little thing else inside the activity. If you're planning a Boiler Service later, you want close offs that honestly shut off. If you may desire a Gas Fire Service or Gas Cooker Installation nearby, you would like the gasoline and combustion pipework separated cleanly and checked true. And if the purchaser is touchy to mess, air good quality, and disruption, the method you path pipes and isolate zones matters simply as plenty as boiler range.

## **The hidden activity: why pipework design controls everything**

A ultra-modern combi boiler or device boiler does extra than warmness water. It manages pass charges, stress drops, growth, and protection applications that simplest behave in fact whilst the hydraulics make sense.

When persons speak about faults, they ordinarily mention the boiler first. A sensor reads fallacious, an mistakes code seems to be, and the fix sounds standard. But lots of the time the boiler is reacting to the plumbing.



For example, negative valve placement can make it inconceivable to isolate a radiator loop cleanly. That turns a routine Boiler Service right into a full-equipment drain. A leaky or incorrectly sized filling arrangement can intent tension matters, and people power swings can end in lockouts that look like burner concerns.

Even the order of factors issues. If the boiler is piped with awkward restrictions or a fee valve finally ends up wherein it shouldn't, the circulation may not be what the boiler expects. It can run, yet it runs stressed, with

greater go back temperatures and repeated biking. Over time that's how you get pointless put on and nuisance breakdowns.

There's a intent strong installers treat pipework as a first type layout task, now not a apply-on after the boiler is chosen.

## **Valves don't seem to be "extras" - they're your long term service tools**

In the true world, valves are what permit you to do work without turning the complete construction right into a flood risk. Shut-off valves can help you isolate the boiler for servicing, change a factor, or deal with leaks with minimum disruption.

But not all valves are the same, and no longer each and every method merits from the related arrangement. On a combi boiler setup, the standard expectation is that it is easy to isolate the boiler flow and return and presumably isolate the domestic scorching water area too, based on local follow. On approach boilers, you as a rule need more careful planning around the cylinder charging line, region valves, and any bypass arrangements.

Where valves are put is equally foremost. Put them in a location wherein that you can attain them whilst the boiler is serviced. Put them in which you possibly can entry them with out mendacity on a cold floor with water dripping down your sleeves. And take note what takes place right through upkeep.

Once, I was once called out for a Boiler Breakdown the place the client had already executed "a immediate try out" to isolate the device. The installer had equipped compact valves in a tight cabinet, but the get right of entry to become so confined that the isolation was unreliable. When the plumber attempted to open it lower back, the actuator and pipe joint ended up broken. That grew to become an trouble-free task into an emergency. The boiler wasn't the customary problem. The valve association made the entirety else tougher.

## **Key coordination factors for the period of Boiler Installation**

Pipework and valves ought to be planned together from the beginning. If you design the pipe course first, then add valves later, you as a rule become with lengthy unsupported runs, valves that sit at the back of elbows, or fittings that struggle for area.

A few coordination features come up repeatedly on family jobs:

### **Flow direction, verify valves, and heading off unnecessary resistance**

Many techniques encompass check valves to steer clear of unwanted backflow. The trick is making certain good orientation and keeping off further regulations. A misoriented valve will not be diffused. It can stay away from authentic circulation, create unusual stream patterns, and trigger error that merely make experience whenever you've checked the hydraulics.

Likewise, pipe diameter modifications desire to suit the procedure design. When an individual upsizes in the wrong location or makes use of transitions with out focused on force drop, the boiler can see flows it does now not count on. That can cause deficient temperature manage and, in a few cases, short biking.

### **Vents, air leadership, and why "it heats" isn't the same as "it's right"**

Air is the silent troublemaker. It reduces warmness move, motives pump noise, and will lead to repeated cease-leap behaviour. During installing, air wishes a smart course to depart the device. That approach vent

aspects are situated where air can the truth is acquire, and the place the installer can manage purge and bleeding.

If you're coordinating with different works, like Air Conditioning pipe routes or trenching for exterior services and products, have in mind of vibrations and changes to the building constitution. It sounds dramatic, however it's the style of element that could shift joints and impact how air behaves within the formulation.

## **Pressure factors and the "next time" problem**

You won't service a formulation adequately when you shouldn't degree it accurately. Pressure examine elements, the best option filling preparations, and secure discharge routes aren't non-obligatory. They impact how a Boiler Repair analysis is made later and no matter if a Boiler Installation continues to be sturdy lower than time-honored use.

I've noticed strain elements placed at the back of panels that have been certainly not designed to come back off. That's a planning failure. If get right of entry to is deficient today, it will become a refusal day after today when the following engineer has a collection between endurance and harm.

## **Expansion and safety devices**

A boiler gadget should accommodate growth. If expansion skill is compromised, you'll get pressure fluctuations. Those fluctuations can show up as intermittent faults, specifically on days with large temperature swings.

Also, security gadgets like power alleviation pathways needs to be installed accurately. Discharge pipe routes should still be safe, visible in the course of inspections, and prepared in order that they won't freeze or intervene with regional electricians. It's now not merely compliance, it's real looking probability management.

## **Gas area coordination: Boilers and different gasoline appliances in the same property**

When the belongings has varied gas home equipment, coordination is set greater than plumbing. The gas routing, appliance venting specifications, and isolation approach must be functional and testable.

If there's a Gas Safety Check due for different home equipment, or if you happen to're planning a brand new Gas Fire Installation or Gas Cooker Installation, ask early how the pipe routes are shared. In older homes, you possibly can locate gas and plumbing bundled within the comparable voids, then located later that get admission to is cramped and testing turns into a chore.

For LPG sites, the stakes are distinct. LPG methods behave otherwise under rigidity and require exceptional fittings and properly legislation. If you might be putting in a boiler wherein LPG is used, you want a clear plan for the gasoline give, isolation features, and ensuring the ideal documentation, including a Gas security certificates where desirable.

Also, if the purchaser mentions a Burger van gas setup within sight, or a advertisement arrangement that uses LPG gasoline deliver materials, deal with the data with additional admire. Even while it's a separate arena, assumptions approximately offer compatibility can cause unpleasant surprises. The protected frame of mind is continuously to affirm provide class, check regulators, and be sure all installations tournament the intended gasoline.

## **Power flush and why valve placement matters**

A Power Flush may well be transformative for struggling procedures. Sludge and debris curb potency, can result in noisy move, and may worsen thermostatic performance. But flushing will not be whatever you improvise around present valves.

During installing, you could take into consideration how the system could be flushed later. That involves functional access to gorgeous drain factors, isolation positions that can help you secure the boiler all the way through competitive stream, and the potential to connect flush machinery properly.



On one name I attended, the boiler changed into still moderately new, but the machine were plagued with deficient warm distribution. The targeted visitor wished a Power Flush. The thing wasn't the boiler at all. The valve arrangement made it tricky to maintain the equipment all over the task, and the best feasible choice used to be to put off accessories and lengthen operating time. That's one intent sturdy installers layout for future renovation, now not simply first warmness.

## **Wiring, controls, and the plumbing handshake**

Boilers are controlled by sensors and actuators. The controls must coordinate with the plumbing. For illustration, if the system has area valves, the piping association and control wiring needs to tournament how the boiler expects to peer drift.

On jobs with underfloor heating, there's a further layer. Heat emitters will be extra sensitive to air, and that they oftentimes require cautious balancing and satisfactory flow. The valve and manifold design needs to permit riskless isolation and servicing with out draining the entire circuit on every occasion.

If there's later deliberate Air Conditioning paintings within the related plant space, contemplate long run get entry to and safety clearances. I've noticed instances the place new pipe runs for Aircon left the boiler place tighter, and the knock-on result turned into that separating valves was inconvenient. In a breakdown situation, comfort turns into a hazard aspect.

## **Avoiding the popular deploy mistakes I hinder seeing**

You can do a technically true boiler deploy and still create long-term headaches in case you leave out the real looking plumbing selections. Here are the styles I see mainly.

First is awkward valve get entry to. A valve that you could't attain comfortably could be left untouched throughout the time of servicing, that means carrier turns into emergency mode. Second is wrong isolation

method. If the formulation will not be remedied by means of sections, you prove draining extra than you need.

Third is negative support and alignment. Pipework which is beneath strain at joints will pass a bit with warmness cycles. That can end in pinhole leaks, drips around compression fittings, or seepage around soldered joints. Fourth is forgetting approximately air. If venting and bleeding aren't planned, air pockets can seem and disappear unpredictably.

Finally, there's "it passes the examine" thinking. A commissioning take a look at can ascertain the boiler fires and reaches temperature, however it does no longer assure the manner is balanced or that valves are located for destiny work.

The preferable installations consider uninteresting whilst you watch them being developed. Pipes are neat, supported, and deliberate. Valves are reachable. The engineer can describe how they'll provider it next yr, now not just how it will run this week.

## **A practical guidelines for coordinating pipework and valves**

This is the fast variant of what I'd predict from a cautious installer whilst doing Boiler Installation planning. It's no longer a substitute for producer preparation, however it displays the truly coordination work that prevents later Boiler Repair calls.

1. Confirm drift and return routes, then function boiler isolation valves for straight forward get right of entry to.
2. Ensure superb orientation and location of examine valves and any pass arrangements.
3. Plan venting and bleeding facets so air can get away and be controlled throughout service.
4. Verify power check factors and riskless filling and discharge routes are installed the place they should be reached.
5. Design for future servicing, consisting of useful access around panels and cabinets.

If those factors are dealt with properly, Boiler Service and any later fault discovering transform trouble-free.

## **Commissioning and testing: where plumbing choices exhibit up**

Once the pipework and valves are in position, commissioning brings the whole lot in combination. You can see no matter if the machine behaves correctly, but you furthermore may see no matter if your in advance choices have been sound.

During commissioning, engineers generally investigate water tension, go with the flow fees, temperature upward thrust, burner behaviour, and any related protection sequences. What things to your pipework coordination is that the components responds invariably.

If the boiler struggles to stabilize temperatures, it might level to pass troubles, air in the gadget, or balancing problems. If the process force is gradual to settle, it might probably point out filling arrangements, growth disorders, or a leak that in simple terms opens reasonably when temperatures change.

Valves have effects on this too. If isolation valves are partially closed, stiff, or geared up with restrictive supplies, you might see functionality that appears suitable originally but degrades less than real load. A fantastic commissioning course of assessments the process as it would be used, no longer just because it become manage for first run.

# Boiler Breakdown prevention: how coordination reduces name-outs

Most Boiler Breakdown calls are precipitated via warning signs, no longer root factors. A fault code seems to be, sizzling water drops, radiators cease heating, or tension falls.

If the pipework and valves are good coordinated, you diminish the wide variety of circumstances wherein the boiler becomes the scapegoat. For illustration, if there's a small leak in a joint or the device slowly loses stress, fabulous isolation valves allow you to become aware of and fix the leak with no tense the accomplished device.

Similarly, if a part fails, you desire access. Valves that isolate quickly mean much less draining, less downtime, and less chance of further damage. In busy households, that change is the big difference between "we will be able to wait" and "we want it constant right now."

For homes that experience had repeated Boiler Repair visits, coordination is more commonly what's lacking. The boiler is replaced, cleaned, recalibrated, and still the indications prevent returning due to the fact the underlying device behaviour is not at all wisely corrected.

## When to take into accounts a separate Gas Fire Service or Gas Cooker Installation plan

It's hassle-free to deal with gas appliances as separate jobs, but in a factual assets they proportion area, get admission to routes, and documentation standards.

If a consumer is making plans Gas Fire Installation or a Gas Cooker Installation alongside a Boiler Installation, there's a sensible sequence to believe. You choose to maintain the gas work tidy, guarantee isolation factors are clean, and avoid making it impossible to check and doc appliances later.

This also is the place the Gas protection certificate is available in. It's no longer just bureaucracy, it's evidence that the assessments had been executed good. If pipework entry is awkward or if valves were put in in a method that makes destiny checking out messy, these certificate tests change into tougher.

When a couple of gasoline home equipment are involved, coordinate the time table so the plumber and fuel engineer can paintings without redoing every different's get entry to routes.

## Working simply by area situations: giant platforms, small cabinets, peculiar layouts

Not each and every residence behaves. Some basements are cramped. Some airing cupboards are a patchwork of ancient valves and changed radiators. Some pipe routes run in the back of plasterboard which could't be smoothly opened devoid of making the buyer's decorating existence depressing.

In those area circumstances, I use judgment instead of a rigid template. The purpose stays the similar: isolate thoroughly, vent desirable, strengthen pipework, and hinder get entry to lifelike for future upkeep.

Sometimes which means choosing a distinct valve location to keep get entry to notwithstanding it barely differences the pipe route. Sometimes it method leaving a panel unblocked, even supposing it looks "cleaner" to fill it in. The sparkling appear in many instances expenditures more at some point of servicing later.

In different instances, it means asking questions ahead of committing. If a customer needs a new boiler but also plans Air Conditioning modifications, the provider team needs to be aware of whether pipe [Power Flush](#)

Essex runs might be blocked or even if the plant field becomes congested. A neat job as of late can change into an pricey mess if long run get right of entry to is not noted.

## **Making convinced the procedure remains serviceable after installation**

A boiler process shouldn't be a one-time setting up. It's an ongoing protection dating. That's why coordinating pipework and valves isn't on the subject of getting warmness on, it's approximately retaining the approach riskless and simple to deal with.

When valves are located smartly and the pipework is arranged with long run access in intellect, Boiler Service may well be quickly and thorough. It additionally allows technicians spot troubles early, earlier than they transform Boiler Breakdown incidents.

And it facilitates the client. People note when a provider call is sleek. They discover whilst there's less mess, faster shut-offs, and fewer days ready.

If you're excited about a Boiler Installation and also you desire to keep away from later frustration, ask the installer how they've designed the valve get entry to and isolation strategy. A sensible answer is explicit, not obscure. It should still embody how the boiler will also be isolated, how the equipment might possibly be drained without drama, and what future initiatives like Power flush or part swaps will contain.

That's the kind of making plans you simplest see whilst a person respects the job as a full, pipework and valves protected.