

A running boiler is one of these abode comforts you basically take into accounts while it misbehaves. The day it stops, you notice all the things at once, bloodless radiators, a shower that turns lukewarm, and the uncomfortable realisation that "I'll model it later" characteristically turns into "I want it constant yesterday."

This book is written for householders making plans a brand new boiler setting up, going through a boiler breakdown, or finding out among boiler carrier and boiler restore. I can even conceal fuel fireplace service and gas cooker install, plus the bureaucracy and safe practices checks that should still never be treated as admin. Along the way, I will share the practical choices that have a tendency to make the big difference between a delicate install and a messy one.

What's truly in touch in a boiler installation

A boiler install isn't simply swapping one unit for an extra. Even while the recent boiler "matches the space," you still need the system to be protected, powerful, and like minded with your existing pipework and controls.

In such a lot houses, the installer is coping with quite a few attached components:

- the boiler itself and its interior components
- the gas connection and gas tightness requirements
- the flue, which need to be safely sized and routed for risk-free combustion
- the heating pipework, which includes radiators, valves, and pipe layout
- the controls, like a programmer and thermostat, and from time to time shrewd controls
- the condensate route (for condensing boilers), plus any required draining
- the new water formulation, by and large a cylinder or combi setup, plus circulate arrangements
- ventilation and, in which vital, air provide and risk-free clearances

If any of those items are left out, the boiler can even nevertheless fan the flames of, yet efficiency can undergo and faults can appear instantly. I actually have considered "it really works for now" installs that later advance disorders like cycling, noisy radiators, or asymmetric warm water. Sometimes the basis trigger is as functional as incompatible controls or an undersized formulation return, yet you merely discover it whilst the overall job is finished well.

Picking the accurate boiler to your home

The best choice for so much householders is combi boiler as opposed to manner or usual boiler. People generally consciousness on the acquisition charge, however the lengthy-time period relief and walking expense be counted seriously in your household's warm water demand.

A combi boiler might possibly be a top notch fit you probably have moderate scorching water utilization and you choose sizzling water on demand, no cylinder required. If you have top usage, diverse loos, otherwise you generally tend to run baths and showers concurrently, one could find a combi strains or turns into inconsistent. That is wherein a system or popular boiler with a scorching water cylinder can believe calmer and greater professional.

Then there is efficiency. Condensing boilers are the common-or-garden for most new installations considering they extract extra warm from the flue gases. But prime performance on paper does not catch up

on negative technique balance. If radiators are blocked by using scale, or the strain and circulation are off, you will nevertheless get susceptible heat and chilly spots.

If you are on LPG, the comparable concept applies. LPG can continual the boiler, however gas offer features can differ, and the installing still wants wonderful settings and riskless combustion. If anyone tells you LPG is “in the main the comparable,” ask them how they may look at various protected operation and most excellent flue efficiency after setting up.

Boiler breakdown: when to restore versus replace

A boiler breakdown is nerve-racking for the reason that the treatments feel binary. Either you name individual urgently and wish for the most sensible, otherwise you expect you want a full alternative. In perform, there may be a center floor.

Common signals you possibly going through a fix rather than a substitute encompass:

- the fault is possibly phase failure, like a misguided fan, ignition quandary, or diverter valve problem
- repairs are rather easy and the components itself is or else healthy
- the boiler is not really overly old, and constituents are available
- one could assume low-cost provider life after the fix

On any other hand, alternative turns into more smart whilst:

- repairs are recurring and prices prevent stacking up
- the boiler is close the conclusion of its lifelike lifespan and the system has distinctive underlying issues
- there's awesome corrosion, continual stress issues, or power leaks
- the formulation wishes upgrades besides, equivalent to pipework innovations or essential manipulate changes

The key will never be guessing. A desirable boiler carrier and diagnostic manner needs to find whether or not the dilemma is isolated or symptomatic of broader components problems.

Boiler carrier and boiler restore: what you deserve to expect

People use the terms “service” and “fix” like they suggest the same component. They don't.

A boiler provider is ready asserting protected operation and checking key resources, combustion overall performance, and protection controls. It is likewise a hazard to identify early wear earlier than it becomes a breakdown. Depending for your manner, a Gas safety inspect (and the place important, Gas safety certificate) deserve to be a part of the annual defense regimen.

Boiler restoration is reactive. It responds to a selected fault, like lack of force, ignition failure, or an predicament with the warmth exchanger or controls.

Good technicians do something sophisticated yet excellent all the way through each. They investigate no longer solely that the boiler starts, yet that it runs thoroughly below proper circumstances. That may possibly suggest checking combustion readings, verifying relevant temperature rises, and confirming that the heating device and domestic warm water operate as supposed.

If you may have ever had a boiler “mounted” in basic terms for it to behave oddly later, the usual factors are incomplete fault-locating or a missed device challenge. Sometimes the boiler is merely the messenger.

The hidden offender: approach sludge and the case for vitality flush

Even the superior boiler can underperform if the heating manner is complete of sludge. Over time, corrosion and particles can compile interior radiators and pipework. That can trigger noisy waft, bloodless patches, slow warm-up, and a boiler that short cycles since the gadget struggles to maneuver warmth.

This is in which a capability flush comes up. It is a job that circulates cleaning fluid via the manner at flow charges mighty sufficient to dislodge particles. Whether you need it relies on what's going on. If your radiators are asymmetric, while you see signs and symptoms of flow disorders, or if corrosion background shows vital buildup, drive flush is regularly the change among an k deploy and a definitely nice one.

One purposeful note from genuine-global installs: a vigor flush can disturb debris you did no longer be aware of turned into there. That is also nice, since it clears the procedure, but it additionally potential filters and insurance policy devices rely. A able installer will plan for the cleaning part and make certain the device is good afterwards, instead of treating the boiler swap because the most effective step.

Flues, ventilation, and why "it suits" is just not just like "it's appropriate"

With present day boilers, the flue formulation is a safeguard-important a part of the installing. The path subjects. The termination role issues. The boiler and flue have to be well matched.

Homeowners in some cases see the flue as a beauty phase, a pipe that disappears as a result of a wall or roof. In certainty, the flue impacts combustion and trustworthy dispersal of products of combustion. A wrongly routed or poorly supported flue can bring about performance subject matters, operational faults, or worse.

A ideal Gas protection look at various comprises verifying risk-free operation and precise combustion parameters. If the setting up includes a new flue or adjustments, the technician have to additionally ensure the ultimate setup matches the boiler producer necessities.



Controls and plumbing: alleviation is by and large inside the details

Most convenience lawsuits should not because of the boiler's potential to generate warm. They come from how the heat will get brought and the way the formulation responds.

Small enhancements may have outsized effects. For instance:

- accurate radiator balancing can restore cold rooms devoid of changing the boiler
- thermostats located inside the flawed position can result in over- or below-heating
- pipe sizing and float valves have an effect on how swiftly radiators heat up
- cylinder temperatures and warm water schedules confirm bath consistency

Plumbing paintings may be part of the tale, no longer an afterthought. If the installer replaces the boiler but keeps outdated pipework it's corroded, complete of regulations, or improperly hooked up, it is easy to get leaks or stress instability. Pressure loss can also be sluggish and not easy to understand, unless the day you explore the boiler is generally refusing to run.

For some properties, a boiler setting up additionally overlaps with wider plumbing improvements. That may perhaps embrace recovering get admission to, becoming a top filling loop arrangement, exchanging worn isolation valves, or upgrading device elements that had been "awesome sufficient" till the boiler demanded greater steady performance.

Gas fireplace installation and gasoline cooker deploy: similar safeguard rules, specific equipment

Once you start out all for gasoline safeguard, it makes sense to go searching the home. If you've gotten a gasoline hearth, a gas cooker, or either, it is really worth treating their deploy and maintenance as section of the similar security culture.

A Gas fireplace carrier is not really well-nigh doing away with airborne dirt and dust. It is ready verifying burner efficiency, checking ignition and flame stability, and guaranteeing that protection devices goal top. If you've got you have got a gasoline fireplace that lighting unevenly or produces ordinary smells, do no longer keep looking to "work around it." Get it checked.

Gas cooker set up may be basic while pipework and isolation are in fact deliberate. Still, set up exceptional issues, notably in case you are working with existing feeds, versatile connections, or variations to layout. A stable installer will ponder air flow and secure clearances, after which money dependable operation.

Even for householders who are not changing the boiler, a steady frame of mind can pay off. When boilers, fires, and cookers are all maintained with the correct criteria and documented checks, you reduce the threat of surprises later.

Air conditioning and air con: why it influences heating decisions

This might sound unrelated, yet aircon can result the way you give thought heating upgrades. Some buildings now use air conditioning for each cooling and selective heating. That differences the means men and women sense about comfort. You may perhaps opt you would like a boiler that heats purely detailed zones, or chances are you'll be expecting more from controls on the grounds that you place confidence in air conditioning at instances.

If you run an aircon manner, it's clever to plot how heating schedules have interaction. For example, a heat air con room can have effects on how the thermostat reads the house temperature. That can bring about the heating formula barking if controls don't seem to be set up with the fact of the way your domestic behaves.

In perform, the boiler still necessities to be precise for decent water and the heating demand you the fact is have. Aircon can smooth remedy, however it does now not replace riskless boiler operation.

Commercial aspect situations: burger van gas and catering setups

Most boiler installations are for residences, however gasoline work is fuel paintings, and defense standards commute throughout sectors. A burger van fuel process, as an illustration, comes to the different demand patterns and alternative kit. It may perhaps use LPG and feature higher utilization cycles at some point of buying and selling hours.

The lesson for house owners will not be about even if you run a burger van. It is set consistent checks and greatest setup after any difference. If you could have a business property at residence, like a workshop with catering parties or a small on-web page unit, deal with the fuel gadget with the equal seriousness you are going to observe to a homestead boiler. That way genuine commissioning, nontoxic operation assessments, and documentation when required.

Paperwork and safe practices: Gas defense certificates and beyond

If your boiler installation is in a putting that requires documentation, ask for it. For many family condominium instances, a Gas safety certificate is component to the compliance events. Even wherein you personal and dwell within the estate, safeguard tests and service records are nonetheless successful when you consider that they reveal what was once verified and whilst.

A credible installer should always give an explanation for what they checked, what readings have been taken, and regardless of whether any strategies got here from the findings. You could no longer be left with a boiler and a vague promise that "it's superb."

Good documentation is usually powerful while diagnosing future boiler breakdowns. If the machine has a records of repeated faults, prior readings and provider notes can accelerate upkeep and reduce pointless portions swapping.

Step-by means of-step: what the installer's process ordinarily appears like

Every agency works just a little differently, but a cautious boiler deploy follows a wise sequence. Here is what you'll be able to predict whilst matters are achieved accurately.

1. Site survey and measurements to be sure clearances, flue path strategies, and pipework format
2. Disconnect and isolation of the prevailing boiler, with assessments that the procedure and gasoline line are safe
3. Fit the brand new boiler, connect flue, pipework, and controls, then force and leak checks
4. Commissioning, combustion exams, condensate assessments, and final machine functionality verification

This may be where contractors may recommend excess work, like a energy flush, radiator upgrades, or replacing worn valves. The most advantageous time to talk about these improvements is all over commissioning making plans, now not after you have signed off the first fire-up.

How to decide a efficient installer (with no getting stuck with surprises)

The hardest element of hiring for boiler deployment is which you can not really determine excellent simply through looking out at the completed process. You can, however, ask questions that show whether the installer thinks like a technician, no longer just a more healthy.

Look for any individual who takes time to appreciate your heating approach, now not purely your boiler vicinity. A stable installer will speak the device and what may very well be flawed if the boiler has been unreliable. They will discuss through the recommendations, clarify alternate-offs, and advise a smart plan established on proof, not on guessing.

You must also be careful [Boiler Service Essex](#) of charges that believe too neat. If an installer gives you a charge without clarifying regardless of whether any flue work, electrical variations, formula flushing, or added controls are included, you possibly can turn out paying two times.

If you might be evaluating rates, ascertain they may be like-for-like. Ask how they may maintain vigor flush if sludge is suspected. Ask what they'll do if the heating procedure has strain fluctuations. And ask how they may affirm riskless operation after installation. Those solutions will let you know more than the company of boiler.

Common concerns after install, and how they may be recurrently fixed

Even with a efficient set up, facet instances turn up. Home heating methods aren't an identical, and older houses can disguise surprises at the back of skirting boards and superseded pipe runs.

Here are a couple of everyday post-deploy themes householders record, and what most commonly resolves them:

Radiators take too long to hot up

Often a stability or circulation dilemma. Sometimes the formulation demands flushing or air removal past what a rapid purge can in attaining.

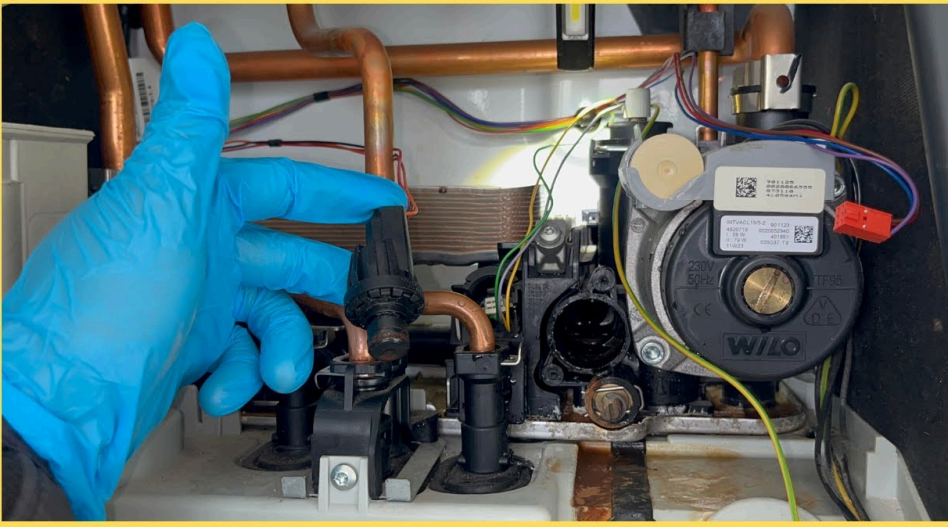
Boiler quick cycles

This can come from warm call for mismatch, keep an eye on settings, or components float complications. In some situations, the boiler is doing what that's designed to do, but the gadget shouldn't be configured to enable it run easily.

Hot water is inconsistent

Can be relating to home sizzling water settings, cylinder controls you probably have a cylinder, or go with the flow restrictions and mixing valve behaviour.

Loud banging or noise in pipework



Often air, tension considerations, or dislodged debris after machine cleansing. This is the place a excellent post-fee payment helps.

Repeated power loss

Could level to a leak, a inaccurate power alleviation pathway, or an expansion vessel obstacle. Pressure stability need to be element of commissioning verification, and if it's volatile, it wishes proper prognosis, now not repeated desirable-u.s.a.

A homeowner tick list previously you e-book the job

If you favor a smoother boiler install, practice a little beforehand. It is one of these small steps that saves time and decreases friction.

- Find out your boiler type and age, and assemble any service or repair records you will have
- Note signs, like whether or not it really is hot water best, heating only, frequent biking, or extraordinary noises
- Confirm whether or not you've a cylinder, what number bogs, and any recognised sizzling water problems
- Ask the installer whether or not a energy flush is usually recommended elegant for your technique's situation
- Ensure you will access the boiler position, pipe routes, and flue route zone for the workday

This roughly sensible readiness allows the installer stream rapid and helps you restrict last-minute surprises.

Maintenance behavior that stay away from boiler breakdown

Even the ultimate boiler will no longer run forever with no judicious care. Most breakdowns start out as disregarded early warnings.

If you've a boiler, treat power and apparent efficiency transformations critically. Radiator chilly spots, vulnerable hot water, regular ignition attempts, or odd smells need to be investigated. Small points in most cases come to be better ones while left unattended.

Annual boiler service is additionally the backbone of lengthy-time period reliability. The settlement of a service is commonly some distance much less than the frustration and expense of an unexpected

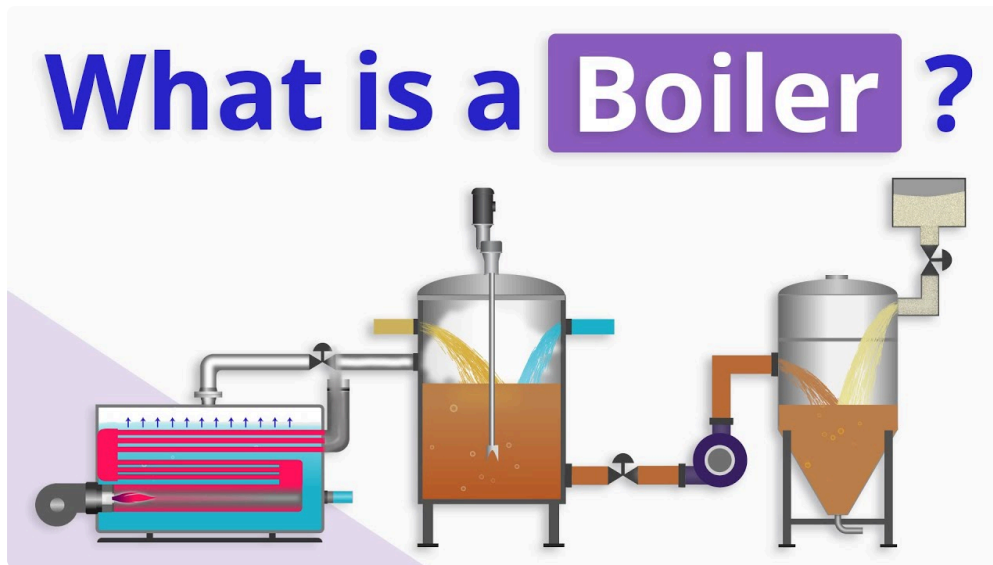
emergency call inside the heart of wintry weather.

And take into account, a boiler is not really the basically fuel equipment in lots of properties. If you have a gas fire or you employ a fuel cooker, schedule their exams too. The domicile is a device, and risk-free operation is dependent on each and every component doing its task thoroughly.

When to plot forward rather than react

If your boiler is failing, you'll probably experience tempted to hurry. Emergencies are factual, and luxury issues. But there may be still worth in planning while you possibly can.

If you think your equipment is close to the quit of its life, or you are making plans preservation, or you would like to enhance performance, timing can make a change. A boiler installation throughout a interval when you'll be able to manage momentary heating and warm water get admission to can lower tension.



When installers ask approximately get entry to and timelines, they're excited by the logistics of flue routing, pipe transformations, and commissioning time. Give them the assistance and the get entry to they want, and you may basically get a more advantageous consequence.

Cost elements you must always in general believe about

People ask about boiler set up can charge as though it really is one range. It isn't. The best can charge drivers have a tendency to be:

- regardless of whether the installation is like-for-like or includes principal design changes
- flue work complexity and path length
- formulation condition, enormously if a vigor flush is needed
- even if new controls or wiring changes are required
- any added plumbing modifications
- labour and scheduling specifications, like weekends or urgent dates

If you would like a pragmatic budget, ask for a close scope of work, now not just a headline parent. A good-explained quote feels less fascinating than a discount, but it helps you ward off the basic obstacle where 0.5 the job will become "more."

Working through the uncomfortable bits: decision making in actual life

Some homeowners be aware of what they prefer, new boiler, achieved. Others are caught among repairing the recent unit and exchanging it. The uncomfortable area is you make a decision while you are not able to expect the destiny.

From journey, the fantastic attitude is to base your selection on what a capable technician finds, now not on desire. If the prevailing boiler has repeated faults, if the device is closely scaled, or if security checks show issues that can not be addressed effectively because of fix, substitute could be the so much economical selection over time.

If the boiler is exceptionally new and the problem appears to be like isolated, a repair should be the life like cross. The trick is not very to deal with restore as a guarantee. It is an answer for the one of a kind drawback found out in these days, with the know-how that protection and monitoring nevertheless be counted.

Final checks prior to you are living along with your new boiler

Once the boiler install is complete, it truly is valued at making time for a appropriate handover. You are usually not simply procuring whatever to run. You are deciding to buy a reliable, predictable equipment that you simply must realize nicely enough to identify hassle early.

Ask methods to perform the controls thoroughly, what common behaviour feels like, and what settings must always be left on my own. If you might have had boiler breakdowns earlier, percentage the indicators that befell final time. A useful installer may still give you the option to inform you what to watch for and what to file if a specific thing feels off.

A boiler carrier agenda will have to also be clean from day one, plus any preparation on gasoline security inspect requirements. If the installer offers statistics for commissioning and protection exams, avert them. They are tremendous later whenever you want boiler fix, troubleshooting, or evidence of compliance.

If you treat your heating approach as an extended-term relationship rather than a unmarried transaction, boiler troubles turned into much less dramatic. The boiler still demands awareness, yet it stops feeling like a thriller mechanical device and starts off behaving like a good-maintained section of your house.